

# Spot Bot

Cellular

## TECHNICAL DATA

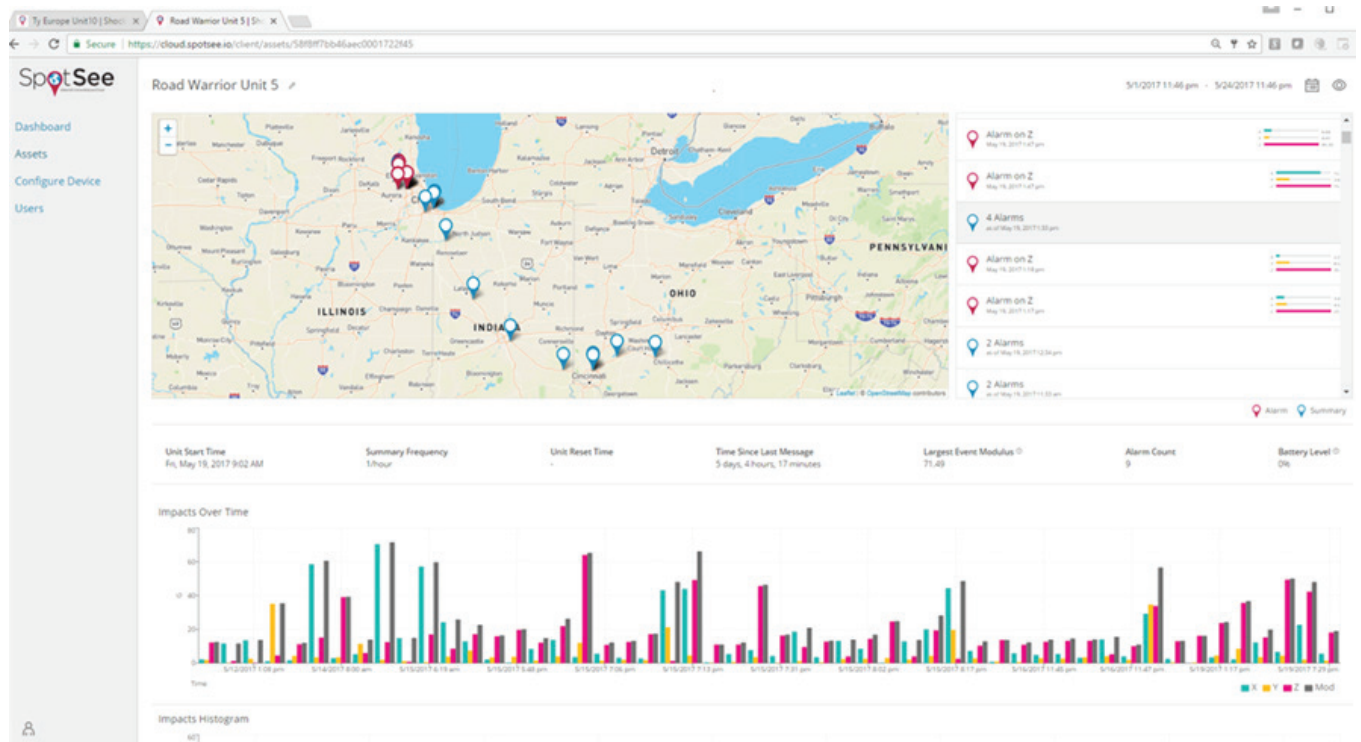


## CONTENTS

Functional .....	3
General Specifications .....	4
Mounting Options .....	5
Power Specifications .....	5
Sensor .....	5
Global Cellular Radio .....	6
Indicators .....	6
Processor .....	6

## FUNCTIONAL

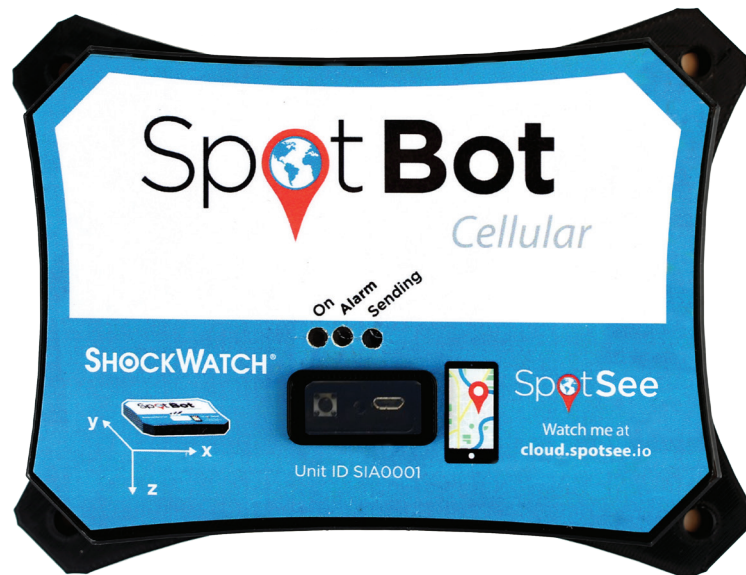
- Impact detection with alerts above user defined thresholds (10g, 20g, 30g, 40g)
- Alerts via cellular communication with impact data stamp, location and temperature.
- Location information from 1h to 24 hour intervals (user defined), even without impacts
- Worldwide coverage via dedicated MVNO network (using Tier 1 local radio networks)
- Secure cloud platform with global accessibility



- Dashboard with all units last location and unit page with dedicated information
- User management and notification controls
- Power save mode to at low connectivity and low battery situations to enhance battery life.

## GENERAL SPECIFICATIONS

<b>Dimensions</b>	W*L*H = 7.000" x 5.250" x 1.375" = 17.78 x 13.335 x 3.5 cm
<b>Weight</b>	1.304 lbs = 590 gr with batteries
	1.104 lbs = 500 gr without batteries



- Wide temperature range: -40°C to +85°C
- Global cellular 3G connectivity (internal SIM)
- USB 2.0 connector
- Enclosure rating IP67

## MOUNTING OPTIONS

- Screw mount
- Magnet feet (optional)
- Adhesive Pads (optional)

## POWER SPECIFICATIONS

**Operating voltage:** 9V internal battery pack

---

**Batteries:** 6 x 1.5V Lithium AA Batteries (will work with 1.5 Alkaline AA Batteries)

---

**Battery life in normal cellular coverage conditions with Lithium batteries:**

---

1 (summary / event) per day	243 Days
1 (summary / event) per hour	95 Days

## SENSOR

- 3-Axis, 3200 g Digital MEMS Accelerometer
- Shock event detection and Activity/inactivity monitoring
- Wide temperature range: -40°C to +85°C
- 10,000 g shock survival
- Pb free/RoHS compliant

## GLOBAL CELLULAR RADIO

<b>Bands</b>	UMTS 800/850/900/
	AWS/1900/2100
	GSM 850/900/1800/1900

CE, GCF, FCC, PTCRB, IC approved

## INDICATORS

<b>LEDS</b>	Green/yellow	On and low battery
	Red	Alert
	Green	Transmitting

## PROCESSOR

- ARM Cortex-M4F processor core
- 1024 KB Flash memory
- 256 KB single-cycle System SRAM